



February



4-H NEWSLETTER

County Club Day

February 19th, 2025

[Register by Clicking HERE](#)

DEADLINE: February 7, 2025

Club Day Categories & Events

Parliamentary Procedure:

Gavel Games or Model Meeting

Presentations:

Show and Tell

Project Talk (7-9) (10-13)

Demonstration, Illustrated Talk, or Digital Presentation

Cover Letter, Resume and Interview

Reading

Public Speaking

Extemporaneous Speaking

Music

Vocal: Solo, Ensemble Chorus

Instrumental: Solo, Ensemble, Chorus

Talent

One act play

Skit or Novelty act

Vocal Performance or Dance

https://www.meade.k-state.edu/4-h/county_club_day/

What's In This Month's Issue?

- **DEADLINES**
 - Club Days
 - Swine/Goat Producer Day
- Babysitting Clinic
- Upcoming Events
- Calendars
- Blue and Gold Order Form

Contact Us

Meade County Extension Office:

Address: 407 E Rainbelt

PO Box 369

Meade, KS 67864

Phone: (620) 873-8790

Wadona: wlhenson@ksu.edu
(620) 518-6653

Leslie: lesliedenise@ksu.edu

Website

www.meade.ksu.edu

Social Media

Facebook: /MeadeCoExtension



UPCOMING

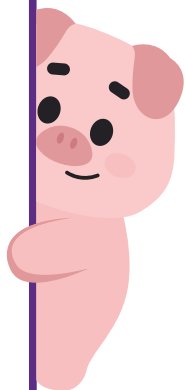
2025 Junior Swine Producer Day

Date: Saturday, March 1

Cost: \$20/person

Registration Deadline: February 5

Location: Stanley Stout Center, Manhattan, KS



2025 Junior Meat Goat Producer Day

Date: Saturday, March 22

Cost: \$20/person

Registration Deadline: February 26

Location: Stanley Stout Center, Manhattan, KS

*There will be an optional tour of the KSU Sheep & Meat Goat Center on the Friday night prior to junior meat goat producer day, as well as after the program concludes on Saturday.

Informational flyers can be found at <https://www.asi.k-state.edu/extension/youth-programs/events/ks-jr-producer/>



**SAVE!
THE DATE!**

YQCA Training

Free YQCA training will take place with Andrea Burns on March 18th, so mark your calendars! Youth for the Quality Care of Animals training is **required** for those who plan to show and sell animals in the county fair. If youth are unable to participate on this day, another training opportunity will be announced soon, or training can be completed online for a fee. More info to come.

UPCOMING



The Blue and Gold order form can be found at the back of this newsletter!

Blue and Gold Fundraising

It's time for our Blue & Gold fundraiser! Sales begin on February 5, 2025. Order forms are available at the office, by email (lesliedenise@ksu.edu), or on our website under the Newsletters tab:

<https://www.meade.k-state.edu/4-h/newsletter.html>.

IMPORTANT:

- Orders will be due to the office on **March 12th** by 4:00pm.
- Delivery will be on **March 27th**. Please make sure that you have someone available to pick up *all* of your orders. We do not have enough freezer space at the office to store orders. We will not know the delivery time until the day of delivery.
- Please remember that money (cash or check) must accompany the order forms. **Checks should be made out to Meade County 4-H Council.**

Note: Selling Blue & Gold is not required, but it is one of the optional requirements on your auction eligibility for the county fair. Funds raised help 4-H Council put on events and activities, contribute towards registrations, and pay your 4-H Online enrollment fee.

Product Information

Sausage: Available in 2.5-pound packages; \$9.75

Bacon: Available in 3-pound packages; \$19.00

Chicken Breast Tender Fritters: Available in 5-pound bags containing approximately 25-30 pieces; \$26.25

NEWS AND EVENTS

Meade County 4-H Cloverbuds

Next Meetings: February 4th in Plains and January 11th in Meade.
Open to youth ages 5-6 by January 1, 2025.

Notice: Plains Cloverbud spring meetings have been moved to Monday, March 3rd and Monday, April 7th.



It's not too late to sign up! Join us for some holiday/winter activities!

Wild Horse
4-H
SUMMER
Camp

Join us in Kingman County at the Silver Maple Campgrounds

JUNE 17-19, 2025
Accepting campers aged 7-12 and counselors aged 14-18

ADVENTURES **OUTDOORS** **ARTS & CRAFTS**

AND SO MUCH MORE!

K-STATE
Research and Extension

The poster features a large wooden sign with the camp name, a curved banner for the location, three circular photos showing children at camp (one with a slide, one with a boat, one with archery), and a green box with the dates. At the bottom are buttons for 'ADVENTURES', 'OUTDOORS', and 'ARTS & CRAFTS', followed by 'AND SO MUCH MORE!' and the K-State logo.

NEW Horse ID Form

Heads up horse project members!

There is a new Horse ID form for 4-H horse shows, including the county fair and state fair. Horse ID forms are due June 1st

New form:

https://bookstore.ksre.ksu.edu/download/horse-identification-certificate_P1039

Example:

<https://www.kansas4-h.org/projects/animal-science/horse/docs/SampleHorseID.pdf>

BABYSITTING CLINIC

**\$35 PER
PERSON**

Our Training Includes:

- ✓ Basic Child & Infant CPR
- ✓ Basic First Aid and Safety
- ✓ Food Prep and Safety
- ✓ Play and Behavior Management

**SATURDAY, MARCH 8
9AM-2PM**

Meade County EMS

725 W Carthage, Meade, KS

Call to Sign-Up: (620) 873-8790

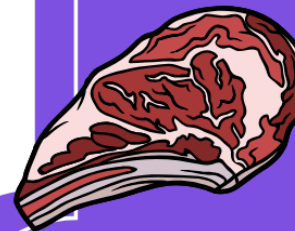
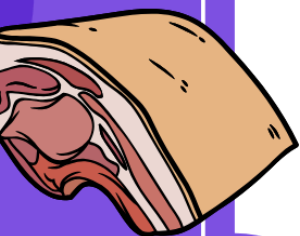
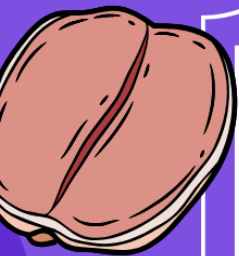
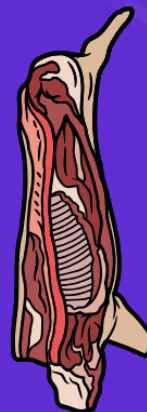


Kansas State University Agricultural Experiment Station and Cooperative Extension
Service

K-State Research and Extension is an equal opportunity provider and employer.

K-State Research and Extension is committed to providing equal opportunity for participation in all programs, services and activities. Program information may be available in languages other than English. Reasonable accommodations for persons with disabilities, including alternative means for communication (e.g., Braille, large print, audio tape, and American Sign Language) may be requested by contacting the event contact Wadona Henson two weeks prior to the start of the event at (620) 873-8790. Requests received after this date will be honored when it is feasible to do so. Language access services, such as interpretation or translation of vital information will be provided free of charge to limited English proficient individuals upon request.

K-STATE
Research and Extension
Meade County



KANSAS STATE UNIVERSITY

INVITATIONAL MEAT JUDGING CONTEST

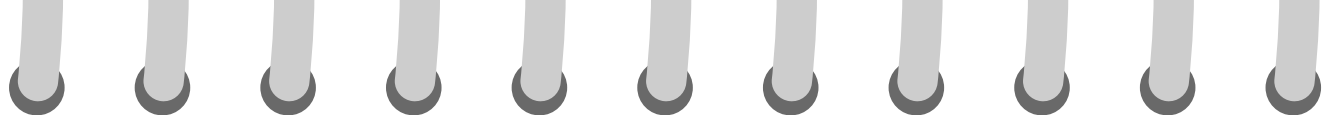
APRIL 5, 2025

**Registration
Coming Soon**

**WEBER HALL
REGISTRATION OPENS AT 7:00AM
CONTEST BEGINS AT 8:00AM**

**REGISTRATION INFO TO COME
QUESTIONS TO ERIN BEYER
ERBEYER@KSU.EDU**





CLUB CORNER

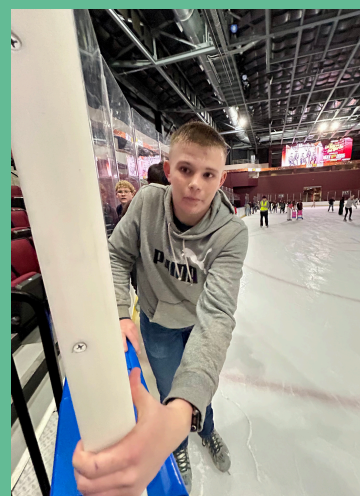
Welcome to the Club Corner, where we will share what the 4-H Clubs are up to! Each month, we will ask the club leaders and club reporters to share any fun news or upcoming events that your clubs have. Have something you want featured next month? Email us!



T & C sewing with Michelle Ross

January Cloverbuds

3C's Ice Skating



2025

February

Sunday	Monday	Tuesday	Wednesday	Thursday	Friday	Saturday
						1
2	3	4 Cloverbuds-Plains	5 Blue and Gold Sales begin Jr Swine Deadline	6	7 County Club Day Registration Deadline	8
9 3 C's Meeting	10 4-Leaf Clover Meeting	11 Town & Country Meeting Cloverbuds-Meade	12	13	14	15
16 CIA in Topeka	17 Extension Office Closed	18 Livewires Meeting	19 4-H Club Days 4PM-?	20	21	22
23	24	25	26 Jr Meat Goat Deadline	27	28	

MONTHLY CLUB MEETINGS

Club	Date	Time	Location
4-Leaf Clover	10th	6:30 pm	Extension Office
Town and Country	11th	4:00 pm	Extension Office
3 C's	9th	3:00 pm	Fowler Grade School
Plains Livewires	18th	6:30pm	Plains Methodist Church



YEAR IN A GLANCE:

IMPORTANT DATES FOR 2024-2025!

February

- 4:** Plains Cloverbuds
- 5:** Blue and Gold sales BEGIN
- 11:** Meade Cloverbuds
- 16-17:** Citizenship in Action
- 19:** County Club Day

March

- 1:** Regional Club Day
- 4:** Plains Cloverbuds
- 8:** Babysitting Clinic
- 11:** Meade Cloverbuds
- 12:** Beef Weigh in
- 12:** Blue and Gold orders due
- 18:** YQCA Training
- 27:** Blue and Gold Delivery

April

- 8:** Plains Cloverbuds
- 15:** Meade Cloverbuds
- 27:** Small Animal Weigh in

May

- 21:** CPR/First Aid training

June

- 4-6:** Discovery Days, Manhattan
- 16:** Wildhorse Camp Counselor Training
- 17-19:** Wildhorse Camp

July

- 21-25:** Meade County Fair



The Blue and Gold order form can be found at the back of this newsletter!



