



# JUNE



## 4-H NEWSLETTER

We have **new hours** to better serve our community!

Until Labor Day, our office hours are:

**Monday - Thursday: 8am-6pm**

**Friday: 8am-12pm**

As always, we are closed 12pm-1pm for lunch.

### SUMMER

## OFFICE HOURS

**LUNCH HOUR: 12PM - 1PM**

.....  
**MON - THURS**

**8AM - 6PM**

.....  
**FRIDAY**

**8AM - 12PM**

.....  
**WEEKENDS: CLOSED**



620-873-8790



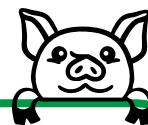
me@listserv.ksu.edu

Meade County  
**K-STATE**  
Research and Extension



### What's In This Month's Issue?

- Updated Summer Hours
- **Upcoming Deadlines**
- State Nominations
- Poultry Testing
- **COUNTY FAIR!!**
  - Fair Entry Dates
- Calendar
- Year at a Glance



### Contact Us

#### Meade County Extension Office:

407 E Rainbelt  
PO Box 369  
Meade, KS 67864  
(620) 873-8790

**Wadona:** wlhenson@ksu.edu  
(620) 518-6653

**Leslie:** lesliedenise@ksu.edu

#### Website

[www.meade.ksu.edu](http://www.meade.ksu.edu)



#### Social Media

[Facebook:/MeadeCoExtension](https://www.facebook.com/MeadeCoExtension)

# NEWS AND EVENTS

## State Livestock Nomination Deadlines

Want to nominate your livestock for the Kansas State Fair or Kansas Junior Livestock Show (KJLS), but you have never been through the process? Or you have done it in the past but may need a refresher of the steps?

**Lexi Hayes** with K-State can help you out! Deadlines are as below.

**June 5:** DNA Envelope orders

**June 15:** Small Livestock

You may also visit KSRE's Livestock Nomination website [here](#).

## Grand Drive and KJLS Important Dates

July 1	Registered Breeding Ewe Papers in Exhibitor's Name
July 15	Kansas State Fair Grand Drive Entry Deadline
July 25	Kansas State Fair Grand Drive Late Entry Deadline
Aug 15	KJLS Entry Deadline
Aug 31	KJLS Late Entry Deadline
Sept. 5-7	Kansas State Fair Grand Drive
Oct. 3-5	KJLS

<https://www.kansasstatefair.com/p/competitions/grand-drive1>

<http://bit.ly/ksunominations>

<http://www.kjls.net/>

\* All market animals must be nominated to be eligible for either show, regardless of breed or gender.

\*\* All commercial breeding females must be nominated to be eligible for either show.

\*\*\* Registered breeding females must be in the exhibitor's name by the appropriate date to be eligible for either show. Refer to show rules for details.

\*\*\*\* All meat goats, including market, commercial breeding does, and registered breeding does must be nominated to be eligible for either show.

# NEWS AND EVENTS



## Day Camps: Save the Dates!

We've got some exciting day camps planned for the summer. We'd love to see you there!

Mark your calendars for these events:

June 13: Fishing Day (**registration closed**)

June 25: Chalk Our Walk (see flyer below)

July 1: 4-H Day Camp (see flyer below)



## Spring Fundraiser

4-H youth sold \$9,469-worth of Blue & Gold this spring! What an amazing job you all did.

This gave 4-H Council a profit of \$628.70!

**Sausage: 400 rolls**

**Bacon: 330 packages**

**Chicken: 92 packages**

Bonus: Just in case anyone was wondering, that's **2,450** pounds of food!

We'd also like to send a **THANK YOU** to the youth who helped unload and organize **822 (!)** boxes: **Karay Henson and Walker Koons** (Four Leaf Clovers), **Colt Dizmang**, **Saul Mendoza**, **Bryce McDowell** (3C's), and **Kellie Miller** (Town & Country).

THANKS FOR ALL YOUR HARD WORK, WE APPRECIATE YOU!

*Don't forget*

## 4-H Council Meeting

The next 4-H council meeting will be held on July 9th at 5:30pm at the Extension Office.

## Summer Intern

We are very lucky to welcome back **Jateice Vieux** this year! She will be providing programming at local libraries and at the Extension Office this summer. Stay tuned for some awesome programs to be announced soon!!

# Funky Time at the Fair!

**County Fair is July 21 - July 25!**

**Meade County Fair Schedule:** <http://bit.ly/42gtpwj>  
(Schedule is subject to change, check FB page for updates)

**Meade County Fairbook:** <https://bit.ly/42NWdfI>



## Fair Books are Here!!

Fair Books are available at our office! Pick yours up or find it on our website.

<https://www.meade.k-state.edu/4-h/fair/fair.html>

## Fair Entry Opens Soon!

**June 23:** Pre-entry Opens  
**July 14:** Enrollment Ends

Link to Enter:  
<https://fairent.com/Fair/SignIn/22204>



## 2025 POULTRY TESTING FOR FAIR!



This year, ALL POULTRY entering the fair MUST be tested, regardless of “4-H” or “Open Class” status. Testing will be July 9<sup>th</sup> at 9:00am in the Indoor Arena at the fairgrounds. USDA’s Christy Whipple will be leading the testing.

For more info on testing, visit: <https://bit.ly/3Srhsy8>

## Fair Set Up and Clean Up

Set Up: Saturday, July 18, 5:00pm (Pizza provided)  
Clean Up: Saturday July 26, 9:00am (Donuts provided)



Just as last year, there is a scheduled time for setting up and cleaning the fairgrounds. **Both Fair Set Up and Clean Up are required for 4-Hers to get their premium money.** If unable to attend either/both events, please make arrangements with the office **at least 7 days prior to the event.** We understand people have other commitments before and after fair, but everyone plays a part!



# NEWS AND EVENTS

## Shooting Sports Practices and Notices

**Archery:** Practices will be the week of July 7-11 beginning at 6:30 pm. Remember you need to attend at least one practice prior to competing for the County Fair on Saturday, July 12.

**Note:** the last day to enroll in Fair Entry for ALL shooting sports at the fair is July 10th.

**Shotgun:** If you are NEW to the Meade County 4-H shotgun project, you MUST attend a range safety course with Rockie Hawley prior to competing at the County Fair. He will be available July 7-11 from 5 to 6:15. Contact the office to make arrangements. The Range Safety takes about 30 minutes to complete.

## 4-H Foods and Nutrition Rules

This rule is a requirement for County AND State Fair. For food safety purposes, any entries with frosting/filling must calculate the amount of sugar in the frosting/filling recipe only. Calculation must be attached to entry, or the placing will be lowered one ribbon when judged. Frostings/Fillings need to contain more than 65% sugar for safety. Examples on how to calculate this percentage are included in the publication located at:

[https://bookstore.ksre.ksu.edu/pubs/foodsafety-of-frostings-andfillings\\_MF3544.pdf](https://bookstore.ksre.ksu.edu/pubs/foodsafety-of-frostings-andfillings_MF3544.pdf)



## Cake and Pie Auction

Reminder! Youth need to be enrolled in Foods and also have an item judged in foods to be able to participate in the pie and cake auction at the fair. Make sure to enter your food item AND "Foods Auction" as fair entries!



## Photography

Those planning to enter photography at the fair can stop by the Extension Office and pick up mounting boards (\$1.00) and photo sleeves (\$0.50). Please remember there are specific rules on how your photos are mounted. Rules can be found in the fair book.



# CHALK OUR WALK!

WHO: ALL AGES!

WHERE: MEADE CO. EXTENSION

407 E RAINBELT, MEADE, KS

WHEN: 10AM - 12PM, JUNE 25TH

**FREE  
EVENT!**

Popsicles and chalk  
will be provided!  
Don't forget your  
sunscreen!

*Sponsored by:*

**K-STATE**  
Research and Extension



K-State Research and Extension is committed to providing equal opportunity for participation in all programs, services and activities. Program information may be available in languages other than English. Reasonable accommodations for persons with disabilities, including alternative means for communication (e.g., Braille, large print, audio tape, and American Sign Language) may be requested by contacting Wadona Henson by June 3 at 620-873-8790 or [wlhenson@ksu.edu](mailto:wlhenson@ksu.edu). Requests received after this date will be honored when it is feasible to do so. Language access services, such as interpretation or translation of vital information will be provided free of charge to limited English proficient individuals upon request.

Kansas State University Agricultural Experiment Station and Cooperative Extension Service  
K-State Research and Extension is an equal opportunity provider and employer.



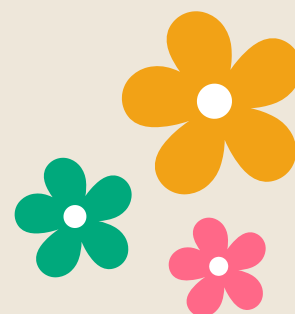
# ***Funky Time at Meade County Day Camp***

**TUESDAY, JULY 1ST**

**9:00AM-2:00PM**

**AT MEADE CITY PARK**

Open to all youth ages 6-12



## **Activities**

Games, Learning, Crafts, Snacks, and more!  
A pizza lunch will be provided.

**\$10 registration fee  
Open to 4-H  
and non 4-H**

Register by visiting  
<https://bit.ly/4dNk8QA>  
or use the QR code!



Deadline to register is May 30th.  
Payments can be made by cash,  
check, or card at the office.

K-State Research and Extension is committed to providing equal opportunity for participation in all programs, services and activities. Program information may be available in languages other than English. Reasonable accommodations for persons with disabilities, including alternative means for communication (e.g., Braille, large print, audio tape, and American Sign Language) may be requested by contacting Wadona Henson by June 18 at 620-873-8790 or [wlhenson@ksu.edu](mailto:wlhenson@ksu.edu). Requests received after this date will be honored when it is feasible to do so. Language access services, such as interpretation or translation of vital information will be provided free of charge to limited English proficient individuals upon request.

**Kansas State University Agricultural Experiment Station  
and Cooperative Extension Service.**

**K-State Research and Extension is an equal opportunity  
provider and employer.**

# 2025

# June

Sunday	Monday	Tuesday	Wednesday	Thursday	Friday	Saturday
1	2	3	4	5	6	7
		Wadona Out of Office for Programming Training				
8 3 C's Mtg	9 4-H Council Meeting 5:30 @ office	10	11	12	13 Fishing Day Camp	14
15 Small Livestock Nomination Deadline	16	17 PLW Mtg	18	19	20	21
		Wild Horse 4-H Camp				
22 T&C Mtg	23	24	25 Fishing Day Camp	26	27	28
29	30	4 LC Mtg - No meeting in June. Next meeting will be July 4th.  <b>FAIR PAPERWORK DUE ON JULY 15TH:</b> <b>Auction Eligibility, YQCA Certificate, Livestock Insurance (optional), Stall Reservations</b>				



## MONTHLY CLUB MEETINGS

Club	Date	Time	Location
4-Leaf Clover (4LC)		No Meeting	
Town and Country (T&C)	22nd	<b>Club Tour: 4pm, route TBD, ends at the lake</b>	
3 C's	8th	3:00pm	408 Pine Street, Fowler
Plains Livewires (PLW)	17th	<b>Club Tour: time and route TBD</b>	





# YEAR IN A GLANCE:

## IMPORTANT DATES FOR 2024-2025!

### June

4-6: Discovery Days, Manhattan  
13: Fishing Day Camp, Meade Lake  
13-15: State 4-H Geology Field Trip  
22-27: 25th National 4-H Shooting Sports Championships, Grand Island, NE  
27-28: Insect Spectacular, El Dorado, KS

### July

1: Meade Co. Day Camp, Meade City Park  
7-11: Archery Practice 6:30 pm  
15: Auction Eligibility Due  
18: Fair Set Up (req'd for premium \$)  
21-25: Meade County Fair  
26: Fair clean up (req'd for premium \$)

### August

7: State 4-H Wheat Expo, Manhattan  
23-24: State 4-H Livestock Sweepstakes

### September

4: Entry Day for 4-H Static Exhibits, Kansas State Fair  
5-14: Kansas State Fair  
20: State Archery Match; Wakarusa, KS  
27: State Fall Small Bore/Muzzleloading Match, Topeka, KS

### October

1: 2025-2026 4-H Online Enrollment Begins  
3-5: Kansas Junior Livestock Show, Hutchinson, KS  
4: State Hunting Skills Match and Field Day, Junction City, KS  
11-12: State 4-H Shotgun Match  
11-12: 48 hours of 4-H

### November

22-23: Kansas Youth Leadership Forum, KS Association of 4-H Volunteers, Rock Springs

### January

10-11: Kansas 4-H Youth Leadership Council Orientation Retreat, Rock Springs  
23: State 4-H Horse Judging, Topeka  
27-29: Kansas 4-H Program Rally, Great Bend

### February

15-16: 4-H Citizenship in Action, Topeka  
21-22: 4-H Horse Panorama, Rock Springs

