



May



4-H NEWSLETTER

⚠ Important Deadlines ⚠

**Please have the following turned in by
Thursday, May 1st!**

4-H Online-Project Enrollment: Log into 4-H Online to review your 4-H enrollment ASAP! Youth must be actively enrolled and may only exhibit projects in the fair that they are enrolled in. Need help reviewing your projects? Give us a call—we're happy to assist!

Horse ID Papers: youth in the Horse project must turn in a Horse ID Paper on any horse you plan to show at the Meade County Fair. This also applies to any horse that will be shown at State Fair. It is recommended to ID each horse you own. Only horses that have IDs are eligible to show at the fair.

Horse ID Form:

<https://bookstore.ksre.ksu.edu/pubs/p1039.pdf>

Wild Horse 4-H Camp: We still have spots for camp! Call or stop by the office if you need any information or would like to register!

What's In This Month's Issue?

- **UPCOMING DEADLINES**
- Small Animal Weigh-In
- Poultry Testing
- Wild Horse Camp
- Rock Springs Ranch Camp
- COUNTY FAIR
- Calendars

Contact Us

Meade County Extension Office:

407 E Rainbelt
PO Box 369
Meade, KS 67864
(620) 873-8790

Wadona: wlhenson@ksu.edu
(620) 518-6653

Leslie: lesliedenise@ksu.edu

Website

www.meade.ksu.edu



Social Media

[Facebook:/MeadeCoExtension](https://www.facebook.com/MeadeCoExtension)

NEWS AND EVENTS

Camp Counselors STILL Needed!

Want to be a counselor at
Wild Horse 4-H camp?

The camp group has created an
application for any 4-Hers 14 and older.

Camp agents will review these
applications and select counselors at
our May meeting.

Find the application on our website
[HERE](#) or grab one at the office.

Applications due **April 25th!**
(Note: will accept late applications)

**HELP
NEEDED**

4-H Cloverbuds

There will be no more Cloverbud
sessions until next season. Thanks for
hanging out with us in 2024-2025!

4-H Council Meeting

Monday, June 9 at 5:30 PM
Location: Extension Office

Poultry Testing

It is Meade County's designated year
for poultry testing! All non-waterfowl
poultry intended for exhibition at the
fair must be tested in advance. We will
send out a notification as soon as the
testing date in July is confirmed.

Camp at Rock Springs Ranch



It's not too late to sign up for camp at Rock Springs Ranch! If you
are interested in going to camp with other 4-Hers from Meade
County, select Session 6, **June 29-July 2.**

Meade County 4-H Council covers \$100 of your registration fee.
Check with your 4-H Club Leader to see if additional assistance is
available. Camp scholarships (camperships) are also offered
through RSR. If you're interested or have any questions, feel free
to reach out or visit their website: [Rock Springs Ranch 4-H Camp](#).



NEWS AND EVENTS

State Livestock Nomination Deadlines

Want to nominate your livestock for the Kansas State Fair or Kansas Junior Livestock Show (KJLS), but you have never been through the process? Or you have done it in the past but may need a refresher of the steps?

Lexi Hayes with K-State can help you out! Deadlines are as below.

May 1: Market Beef (market steers and heifers)

June 15: Small Livestock

You may also visit KSRE's Livestock Nomination website [here](#).

Miller Ranch Scholarship Opportunity

The Miller Ranch is proud to offer a **\$500 scholarship** to one graduating Meade County 4-H senior. This scholarship is designed to support your future education or training as you take the next step beyond high school. To apply, submit a one-page letter to the Miller Bucket Calf Committee answering the following:

- What are your plans after high school, and how would you use the \$500 scholarship?
- As a 4-H alumni, how will you continue to promote 4-H in your home community?
- How do you plan to support and promote the beef industry in the future?

Deadline: Please submit your letter to the office by Monday, June 3rd, 2025.

Whether it helps cover the cost of textbooks or a few tanks of gas, every dollar counts when you're starting out on your own. We encourage all eligible seniors to apply—good luck, and thank you for representing Meade County 4-H with pride!

NEWS AND EVENTS

Kansas 4-H Discovery Days

Discovery Days teaches youth about careers and their college path, allows them to experience the K-State campus, and teaches new ideas, techniques, and skills.

When: June 4-6th, 2025

Who: Youth ages 13-18 before January 1, 2025

Cost: \$235; some sessions may require an additional fee

Theme: Building a Mindset for Leadership

Registration: Register online [here](#)! Closes May 5th, 2025



For more information, visit the event page [here](#).

Day Camps: Save the Dates!

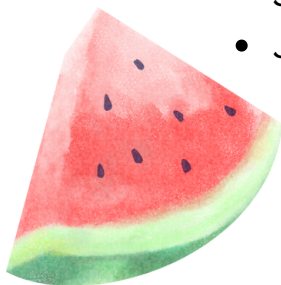


We've got some exciting day camps planned for the summer. We'd love to see you there!



Mark your calendars for these events:

- June 13: Fishing Day (**registration below**)
- June 24: Theme to be announced
- July 1: 4-H Day Camp



More details coming soon!





"Let's Have a Funky Time at the Fair"



**This year's fair theme is "Let's Have a Funky Time at the Fair!"
County Fair is July 21 - July 25.**

Meade County Fair Schedule: <http://bit.ly/42gtpwj>
(Schedule is subject to change, check FB page for all updates)

Meade County Fairbook: <https://bit.ly/42NWdfI>

Auction Eligibility Form



The auction eligibility form is updated! Members may access it via our website, come by the office for a copy, or click [here](#).

Any 4-H'er wanting to sell food or livestock in the Meade County Fair Premium Auction will need to turn their signed form to the extension office by July 15th, 2025 in order to be eligible to participate!

Shooting Sports Practices and Notices



Archery: Practices will be the week of July 7-11 beginning at 6:30 pm. Remember you need to attend at least one practice prior to competing for the County Fair on Saturday, July 12.

Shotgun: If you are NEW to the Meade County 4-H shotgun project, you **MUST** attend a range safety course with Rocky Hawley prior to competing at the County Fair. He will be available July 7-11 from 5 to 6:15. Contact the office to make arrangements. The Range Safety takes about 30 minutes to complete.

CLUB CORNER

At 3-C's April meeting, members took turns practicing archery safety and improving skills (below).

Livewires (right) rescheduled twice, but ended up meeting at 7am - what dedication!
(Surely the donuts helped!)



WILDHORSE 4-H CAMP

ROARING ABOUT 4-H

June 17-19

Silver Maple Camp in Kingman County

Fee: \$135 for non 4-H members,

\$85 for 4-H members

Includes Meals, Activities and Lodging

Campers between 7 and 12 years Old

Counselors need to be 14 and older

Counselors will Arrive on June 16 for Training.

Participating Counties: Meade, Comanche,
Kiowa, Barber, Harper, Kingman and Reno

**DON'T
MISS OUT!**

DEADLINE TO REGISTER IS MAY 2

ARCHERY, CRAFTS, FISHING,
ROBOTS, NATURE, SNACKS,
AND DANCING

K-STATE
Research and Extension





SIGN UP NOW 4-H CAMP

JUNE 17-19

**AT SILVER MAPLE CAMP IN KINGMAN COUNTY
FEE: \$135 FOR NON 4-H MEMBERS,
\$85 FOR 4-H MEMBERS
INCLUDES ALL MEALS, ACTIVITIES AND LODGING**

Return to your County Extension Office by May 2nd

Name: _____ Current Grade: _____

Parent / Guardian: _____ Male or Female

Phone: (Home) _____ Work or Cell: _____

Mailing Address: _____

City & Zip Code: _____

T-shirt Size: (Please Circle) Youth or Adult XS S M L XL

Make Checks payable to your local 4-H Council.


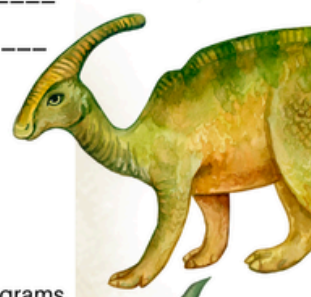

Return form and payment to local County Extension Office.

K-State Research and Extension is committed to providing equal opportunity for participation in all programs, services and activities. Program information may be available in languages other than English. Reasonable accommodations for persons with disabilities, including alternative means for communication (e.g., Braille, large print, audiotope, and American Sign Language) may be requested by contacting the event contact Robin Eubank-Callis two weeks prior to the start of the event May 30, 2025, at 620-886-3971. Requests received after this date will be honored when it is feasible to do so.

Language access services, such as interpretation or translation of vital information will be provided free of charge to limited English-proficient individuals upon request.

**Kansas State University Agricultural Experiment Station
and Cooperative Extension Service**

K-State Research and Extension is an equal opportunity provider and employer.





4-H FISHING DAY CAMP



JUNE 13, 2025

8:00 am - 11:00 am

Register by June 10th

Who: Open to all youth ages 7-12

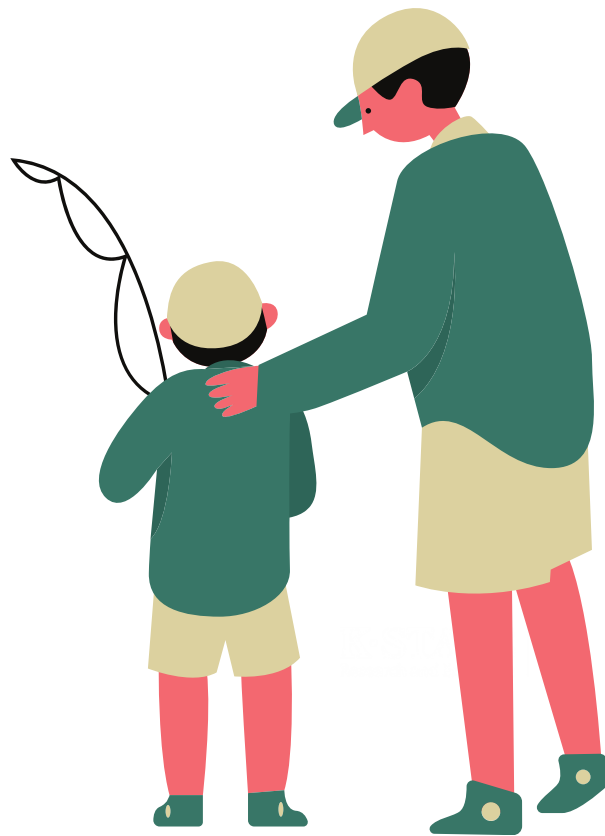
Where: Meade County Lake

Cost: Free*

***Adults must have a vehicle permit if staying with their youth.**



Click [here](https://bit.ly/3wLlhah) to register, use the QR code, or visit <https://bit.ly/3wLlhah>



K-State Research and Extension is committed to providing equal opportunity for participation in all programs, services and activities. Program information may be available in languages other than English. Reasonable accommodations for persons with disabilities, including alternative means for communication (e.g., Braille, large print, audio tape, and American Sign Language) may be requested by contacting Wadona Henson by June 3 at 620-873-8790 or whenson@ksu.edu. Requests received after this date will be honored when it is feasible to do so. Language access services, such as interpretation or translation of vital information will be provided free of charge to limited English proficient individuals upon request.

Kansas State University Agricultural Experiment Station and Cooperative Extension Service
K-State Research and Extension is an equal opportunity provider and employer.

2025

May

Sunday	Monday	Tuesday	Wednesday	Thursday	Friday	Saturday
		<div>Market Beef State Livestock Nomination Deadline MAY 1</div>		<div>1 PROJECT ADD/DROP and HORSE ID DEADLINE</div>	<div>2 Deadline to Register for Wild Horse Camp</div>	<div>3</div>
<div>4</div>	<div>5</div>	<div>6</div>	<div>7</div>	<div>8</div>	<div>9</div>	<div>10</div>
<div>11</div>	<div>12</div>	<div>13</div>	<div>14 T&C Mtg</div>	<div>15</div>	<div>16</div>	<div>17</div>
<div>18 3 C's Mtg</div>	<div>19 PLW Mtg</div>	<div>20</div>	<div>21 4 LC Mtg</div>	<div>22</div>	<div>23 CPR Training</div>	<div>24</div>
<div>25</div>	<div>26 SORRY WE'RE CLOSED</div>	<div>27</div>	<div>28</div>	<div>29</div>	<div>30</div>	<div>31</div>

MONTHLY CLUB MEETINGS

Club	Date	Time	Location
4-Leaf Clover (4LC)	21st	5:00 pm	Fairgrounds, Harris Arena
Town and Country (T&C)	7th	6:30 pm	Building B
3 C's	13th	5:00 pm	Fowler Grade School
Plains Livewires (PLW)	19th	6:30pm	Plains Methodist Church



YEAR IN A GLANCE:

IMPORTANT DATES FOR 2024-2025!

April

7: Plains Cloverbuds
15: Meade Cloverbuds
20: DNA beef envelopes deadline
28: Small Animal Weigh-in

May

1: State livestock nominations due: Beef

June

4-6: Discovery Days, Manhattan
5: Last day to order DNA envelopes: Small Animal
9: 4-H Council Meeting
13: Fishing Day Camp
15: State livestock nominations due: Small Animal
16: Wildhorse Camp Counselor Training
17-19: Wildhorse Camp

July

1: Day Camp at Meade City Park
7-11: Archery Practice 6:30 pm
15: Auction Eligibility Due
18: Fair Set Up (req'd for premium \$)
21-25: Meade County Fair
26: Fair clean up

August

TBA - State 4-H Wheat Expo, Manhattan
TBA - State 4-H Livestock Sweepstakes

September

5 - Kansas State Fair
20: State Archery Match; Wakarusa, KS

October

1: 2025-2026 4-H Online Enrollment Begins
3-5 KJLS
11-12: State 4-H Shotgun Match, location
11-12: 48 hours of 4-H

November

22-23: Kansas Youth Leadership Forum, Rock Springs

